

Renegade Roundup



What you need to know for Fall 2018

August 13, 2018

Dear Colleagues,

Are you ready for Opening Day? Make sure it's on your calendar this **Thursday, August 16, 2018!**

Join us at the **Indoor Theater** where we'll kick off the morning with breakfast in the courtyard at 8:00AM. The morning program will begin promptly at 9:00AM with a grab-and-go lunch provided in the courtyard. Opening Day is our official welcome to the new academic year for all faculty and staff. For this special occasion, we will be closed to the public for all employees to attend.

When you arrive to the Indoor Theater, our Flex Week team will provide you a handout guiding you to the afternoon sessions based on your role.

Enrollment Update

The August 1st report from the KCCD Research Office shows enrollments increased by 3,400 (6%), and FTES increased by 178.5 (2.6%).

Bakersfield College	Point-in-Time Comparison ¹			
	Fall - 3 Weeks Till Start of Term			
	Fall 2017	Fall 2018	Diff	% Chg
Current Headcount	19,718	19,762	44	0.2%
Duplicated Enrollments	54,806	58,206	3,400	6.2%
Waitlisted Enrollments ²	7,152	7,657	505	7.1%
Current FTES ³	6,807.0	6,985.5	178.5	2.6%
Workload (FTEF)	471.0	500.5	29.6	6.3%
FTES/FTEF ⁴	14.2	14.0	-0.2	-1.7%
Active Sections	2,000	2,267	267	13.4%

How to Park Smart!

Since enrollment is up, it's important that we know how to park smart! Try taking different forms of transportation to campus, such as carpooling with colleagues. Live close by? What about utilizing our new bike racks? The GET bus is a great public transportation option, and carpooling is a cool way to get to know your colleagues.



I sent a challenge to President's Cabinet to decrease the number of cars we bring on campus and asked each one to find alternative methods. Here are two responses so far....Tom Gelder will park and bike to campus and I will carpool with three others or be dropped off. I ask each and every one of our employees to systematically plan alternative methods for the first three weeks of the semester and also encourage your student by posting this information on Canvas and other media that you use to communicate to students prior to the semester starting.

Spreading the Word

Posters marketing "A Better BC" and a one-page fact sheet are available for download on the **A Better BC** website. Help us spread the word by posting in your office and department!<https://www.bakersfieldcollege.edu/facilities/construction/help-spread-the-word>

2018 Summer Bridge is a Wrap

Did you know students who complete the BC Summer Bridge academy are twice as likely to complete more units and persist to their second year as those who do not attend the program? Student success programs like Summer Bridge are critical to student success, especially with the new community college funding model which is based heavily on completion versus enrollment.

This summer, faculty across disciplines, support staff, counselors, advisors, and more signed up to be Bridge mentors. These experiences are life changing for our students so thank you for being a part of this program. You MUST SEE the video of incoming freshman, **Daryl Maiden** speaking to **Tori Cooper** of 23 ABC.

Enjoyed seeing Chancellor Tom Burke participating in Summer Bridge.

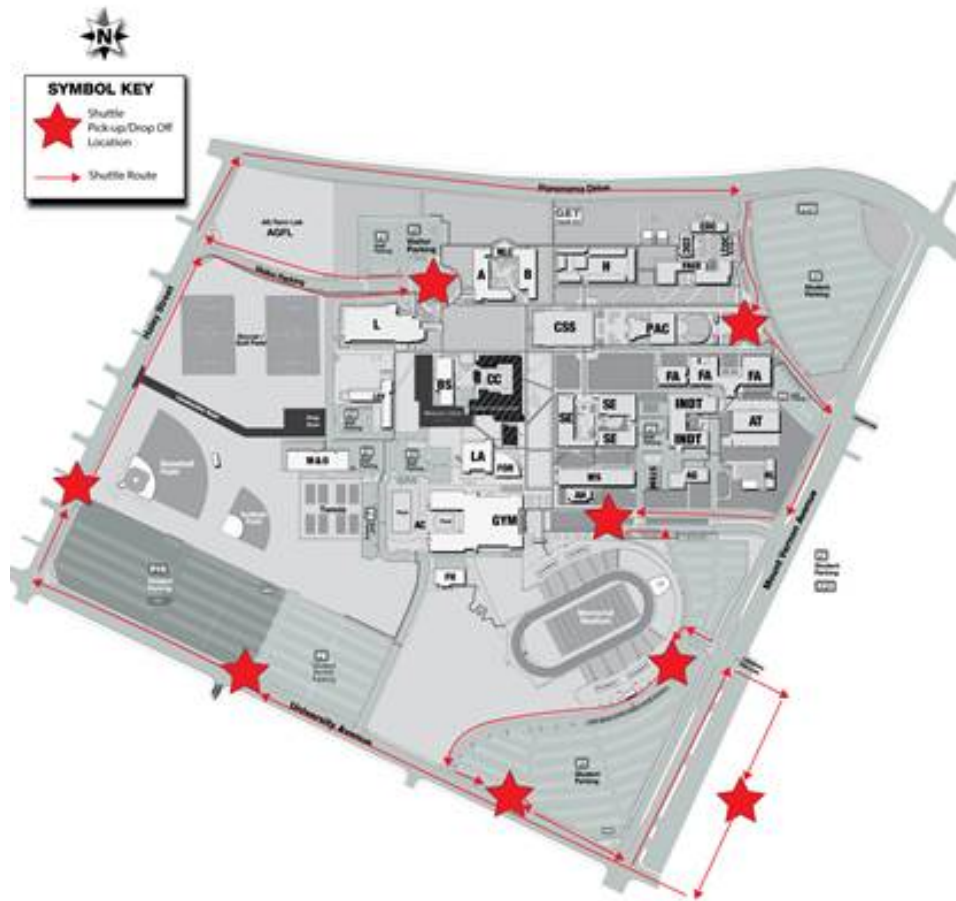


Fall 2018 Renegade Shuttle Express

In an effort to accommodate the massive enrollment and parking lot closures, a shuttle will be doing pick-ups and drop-offs for students/staff at various location points across the BC campus for the first month of school. These pickups will run from 7am-3pm, Monday through Thursday.

The designated drop-off/pick-up sites will be as follows:

1. P16 north entrance
2. P16 south entrance
3. BC Circle near Admin building
4. P7 south entrance
5. Fastrip Parking Lot on east side of Mount Vernon
6. P6/P7 near Memorial Stadium
7. Red and White Way near Huddle
8. P3 Roundabout



The Renegade Shuttle Express Route Map

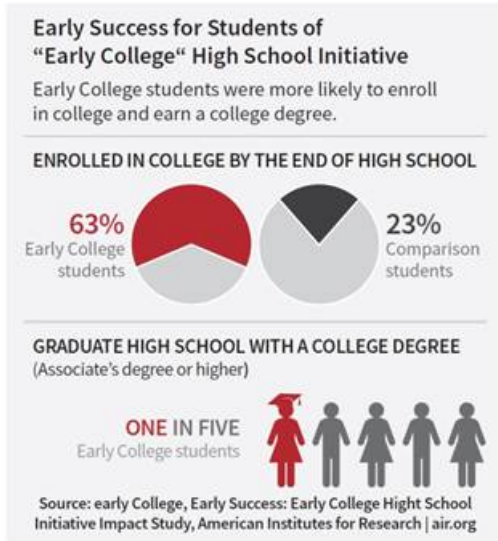
I would like to thank Nicky Damania, Chief Counts and Tamara Baker for working through all the details.

Exploring Early College & Wonderful Ag Prep

Just as the California State Legislature was inspired to adopt the California Master Plan for Higher Education in 1960, Bakersfield College is prepared to lead the way and advocate for our rural education and early college program as a model to revolutionize access to higher education. We know that the future success of our state and country demands an agile educational system with the flexibility to serve the needs of our evolving 21st Century economy and diverse student populations, and to reduce the strain on time and financial resources.

We know that at the top of our priority must be creating a system that increases access and equity, affordability, preparedness, and accountability for academic quality. The groundbreaking work being done thus far at Bakersfield College, along with the recent data documenting its success, has inspired a partnership to bring Early College to be within the grasp of every child, every student, and every family throughout our community, region, and state. Across seven high school districts in Kern County, BC expects to have a 40% increase in sections offered and will serve approximately 4,000 students during the Fall of 2018. BC has exponentially expanded the Early College Program as the groundwork for systemic change.

In 2018, we graduated the first cohort of Wonderful Ag Prep students who began their college pathway before stepping foot into a high school classroom. These 90 students remained committed to their college pathways and have made history this year. This is only the beginning of a bright, promising, and wonderful future for Kern County through early college programs.



It's an exciting time to be at the Home of the Renegades!

That's all for now.

Until next time.

With much Renegade Pride and Collegiality,
sonya

[See all issues of Renegade Roundup online](#)