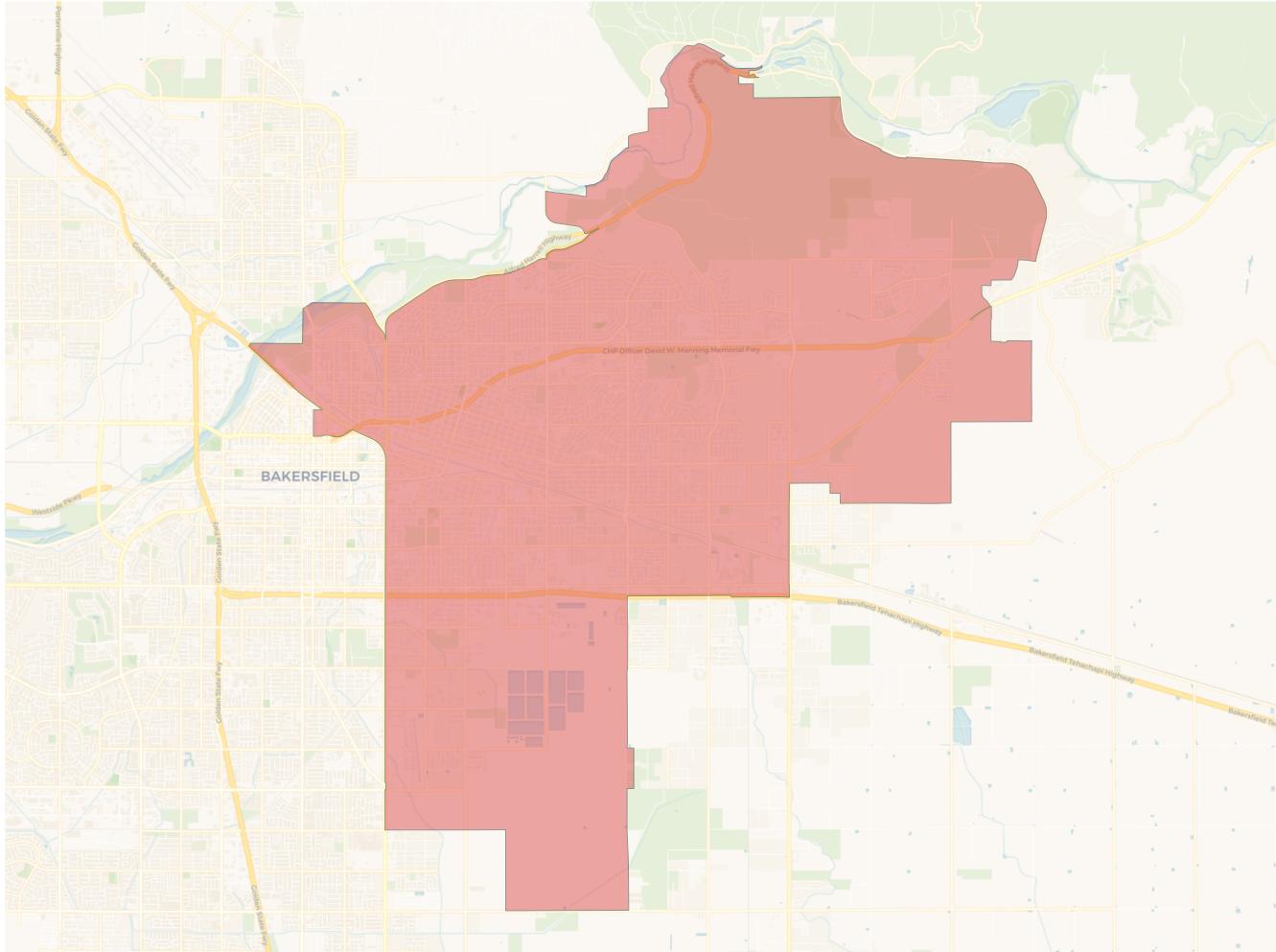
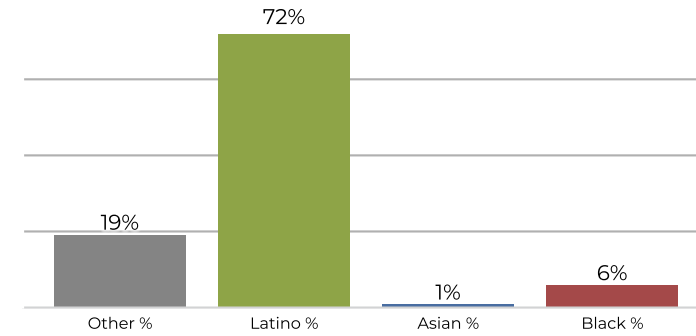


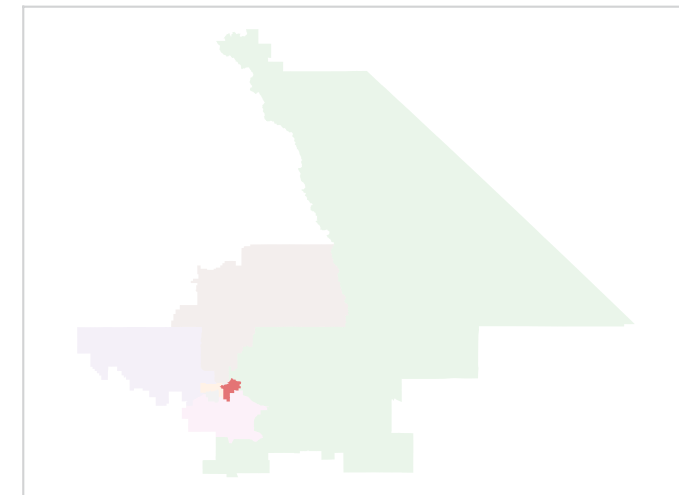
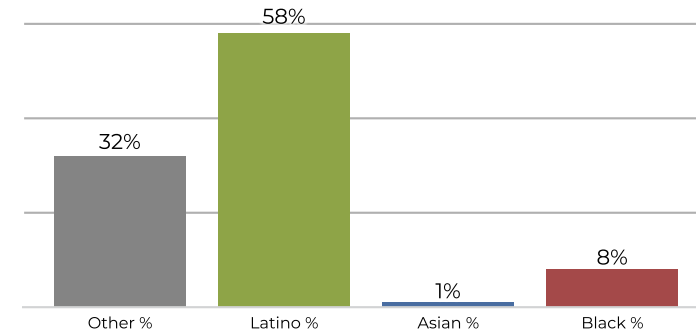
District 3



2020 Census



Citizen Voting Age Population



Population	Deviation	Deviation %	Other	Other %	Latino	Latino %	Asian	Asian %	Black	Black %
146,870	4,585	3.2%	29,121	19.8%	107,025	72.9%	1,920	1.3%	8,804	6.0%
Total CVAP	Other CVAP	Other CVAP %	Latino CVAP	Latino CVAP %	Asian CVAP	Asian CVAP %	Black CVAP	Black CVAP %		
74,585	23,903	32.0%	43,394	58.2%	1,246	1.7%	6,042	8.1%		